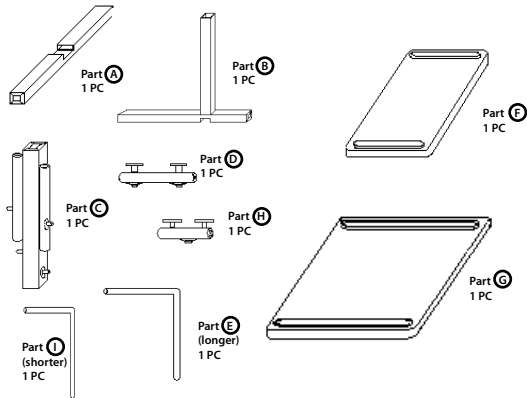


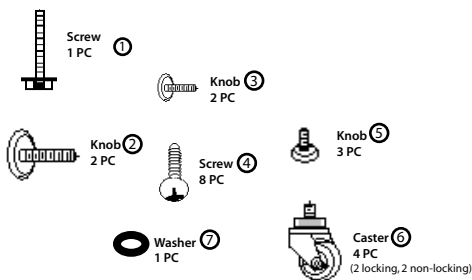
PRC100

Assembly Instructions

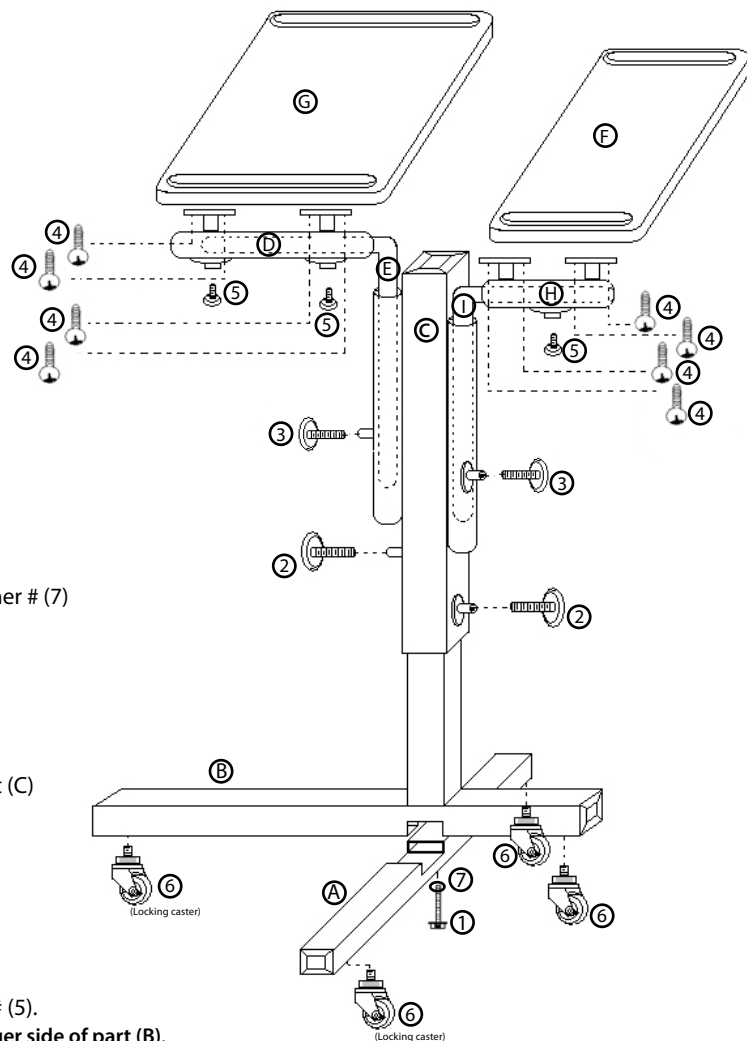
Parts



Accessories



Tools Required: Phillips Screw Driver #3



Step 1: Assemble Base

- 1) Attach part (A) to part (B) using screw # (1) and washer # (7)

Step 2: Assemble Top

- 1) Slide part (C) over the upright stem of part (B) and secure with knobs # (2)
- 2) Slide longer tube of part (E) into the tube on part (C) and longer tube of part (I) into the second tube on part (C) as picture in the diagram. Secure with knobs # (3).
- 3) Attach part (D) to underside of part (G) and part (H) to underside of part (F) and secure using screws # (4)
- 4) Slide part (D) with attached tabletop onto protruding tubes of part (E) and part (H) with attached tabletop onto attached part (I) and secure with knobs # (5).
Note: the lager platform should be directly above the longer side of part (B).

Step 3: Assemble Casters

- 1) Insert casters # (6) into bottom of base part (A) and (B)

Step 4: Adjusting Tops

- 1) Adjust height of top using knobs # (2) and # (3)
- 2) Adjust angle of top using knobs # (5)



OKLAHOMA SOUND CORP.
149 Entin Road Clifton, NJ 07014
Telephone 973-594-9000 • 800-261-4112
www.oklahomasound.com